

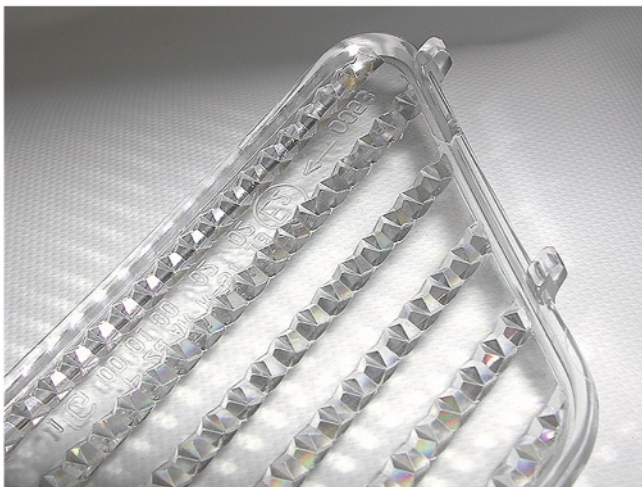
Twin™ is a new type of high quality lens prototype developed with **DBM Reflex** technology and know-how.

TWIN™ are produced by high speed machining, directly in PMMA. This results in a part that is practically identical to a moulded part: the characteristics of finish and shape (optical radius) being the same.

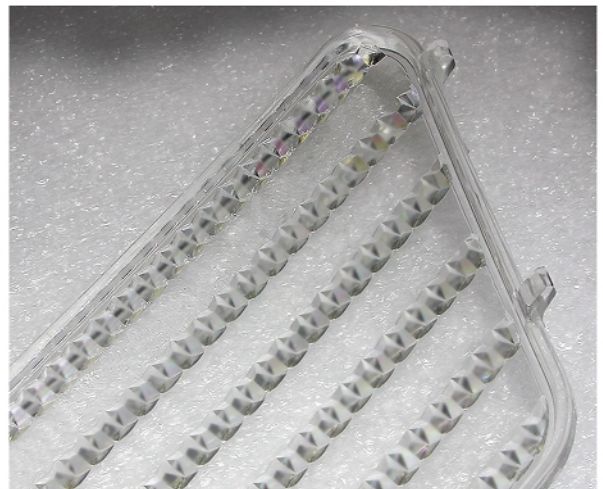
The TWIN™ allows for the validation of a number of points critical to the general aspect of the product, assembly and photometrics. The TWIN™ is also an excellent starting model for the production of parts from silicone moulds.

Characteristics:

	Moulded part	TWIN™
Refractive index	1,49	1,49
Light transmittance (clear)	92 %	92 %
Min. radius (mm)	0 – 0,02	0,2



Moulded part



Twin™